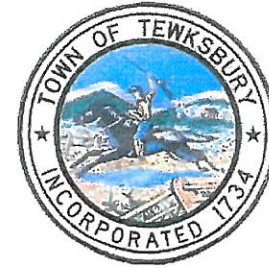


Welcome to the Trails and Open Spaces of Tewksbury MA.



Kiosks at Trail Heads



Additional trails at Rogers Park, Foster Park, Chandler Well Fields, Poplar Street Well Fields, State Hospital Trail, and Pines Cemetery Trail.

TRAILHEAD VERSION OF RULES & REGULATIONS

Be a Good Neighbor; Don't impinge on the enjoyment of others.
As a user, you are a steward of Public Trails and Lands.

Daylight use only

Camping is prohibited

Pets must be leashed (or under control) at all times. Remove all pet waste.

Carry in/Carry Out - Leave No Trace

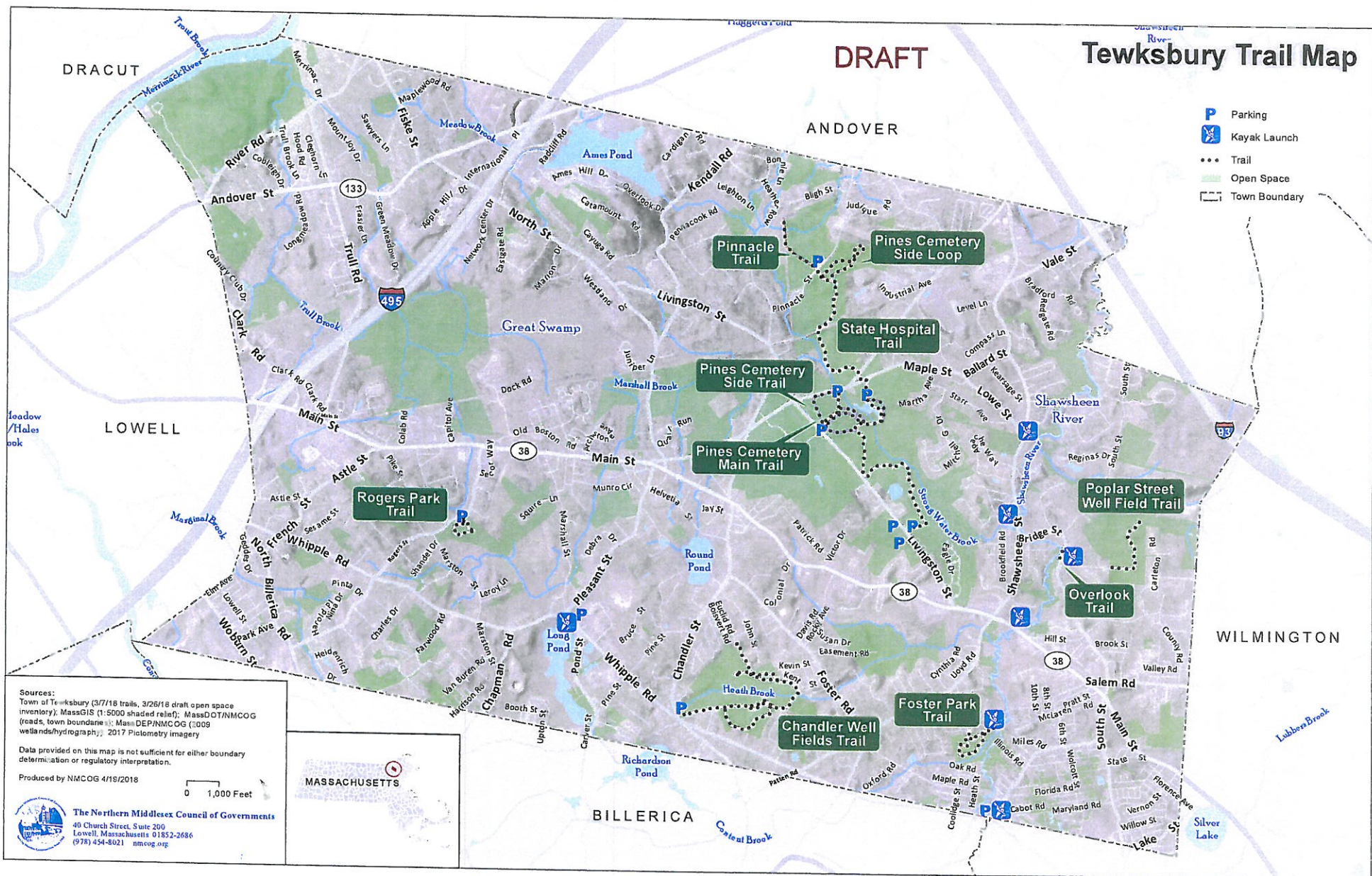
Report (in detail) areas requiring attention to the Conservation Commission

Violations subject to non-criminal disposition

No Alcohol, Hunting, Dumping (including grass clippings, leaves, and branches),
Vandalism, Trapping, Fires, or Paintball

Motorized vehicles are prohibited

The Town of Tewksbury and the Conservation Commission assumes no
responsibility whatsoever for any injuries to persons or property of anyone using
this land area.



Town of Tewksbury, MA

Foster Park Conservation Area

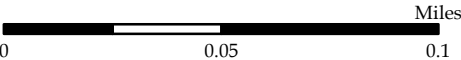
Please review the Rules and Regulations for the use of
Tewksbury Conservation Land prior to your visit.

Limited street parking available on Edith Drive.

Map Legend

- Trail
- Trail Access
- Wetlands

Tewksbury
Community
Development



Sources: ESRI, MassGIS, Town of Tewksbury
Basemap: World Imagery, OpenStreetMap





Town of Tewksbury, MA

Rogers Park Conservation Area

Please review the Rules and Regulations for the use of
Tewksbury Conservation Land prior to your visit.

Parking available on Rogers Street.

Map Legend



Trail Access



Trail

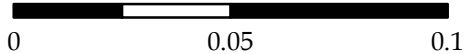


Wetlands

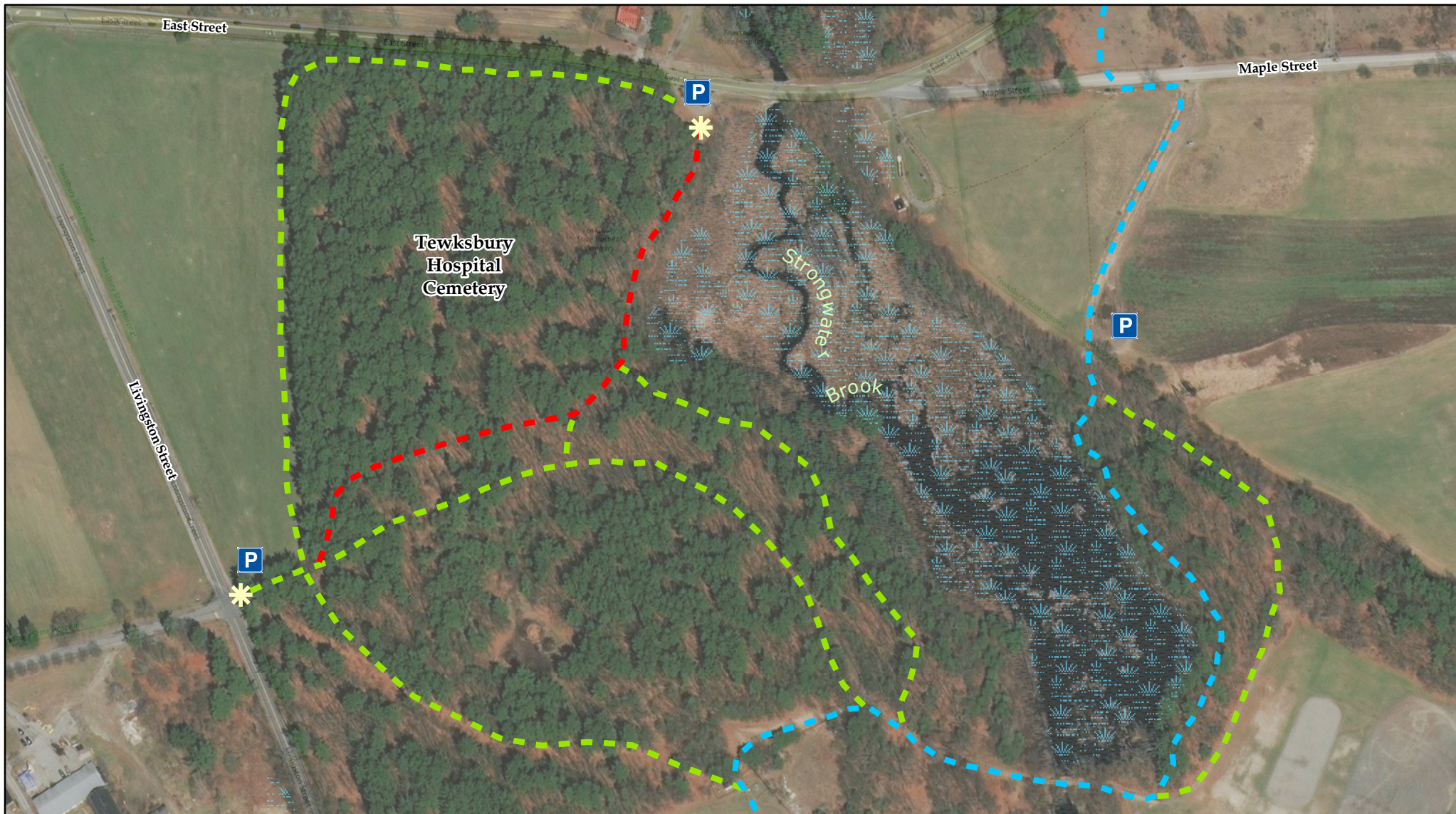
Tewksbury
Community
Development



Miles





Sources: ESRI, MassGIS, Town of Tewksbury
Basemap: World Imagery, OpenStreetMap



Sources: ESRI, MassGIS, Town of Tewksbury
Basemap: World Imagery, OpenStreetMap

Map Legend

- — — "The Pines" Cemetery Main Trail
- — — Proposed Bay Circuit Trail
- — — Side Trails
-  Trail Access
-  Wetlands

Miles
0 0.05 0.1



Tewksbury
Community
Development

Tewksbury Hospital Cemetery "The Pines" Trails

Please review the Rules and Regulations for the use of Tewksbury Conservation Land prior to your visit.

Parking areas available off of East Street, Livingston Street, and Maple Street.

Town of Tewksbury, MA

State Hospital Conservation Restriction Area

Please review the Rules and Regulations
for the use of Tewksbury Conservation Land
prior to your visit.

Parking available at the Pinnacle Airfields
and Livingston Street Recreational Area.

Map Legend



Trail Access



Proposed Bay Circuit Trail



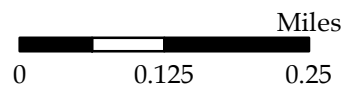
"The Pines" Cemetery Main Trail



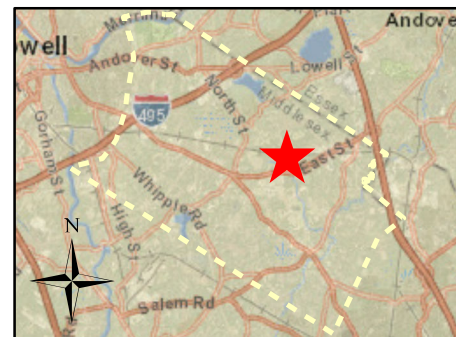
Side Trails



Wetlands



Sources: ESRI, MassGIS,
Town of Tewksbury
Basemap: World Imagery,
OpenStreetMap



Tewksbury
Community
Development

